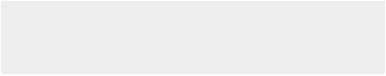
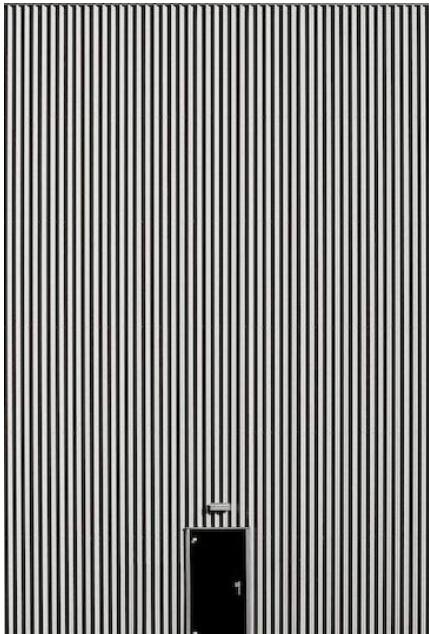
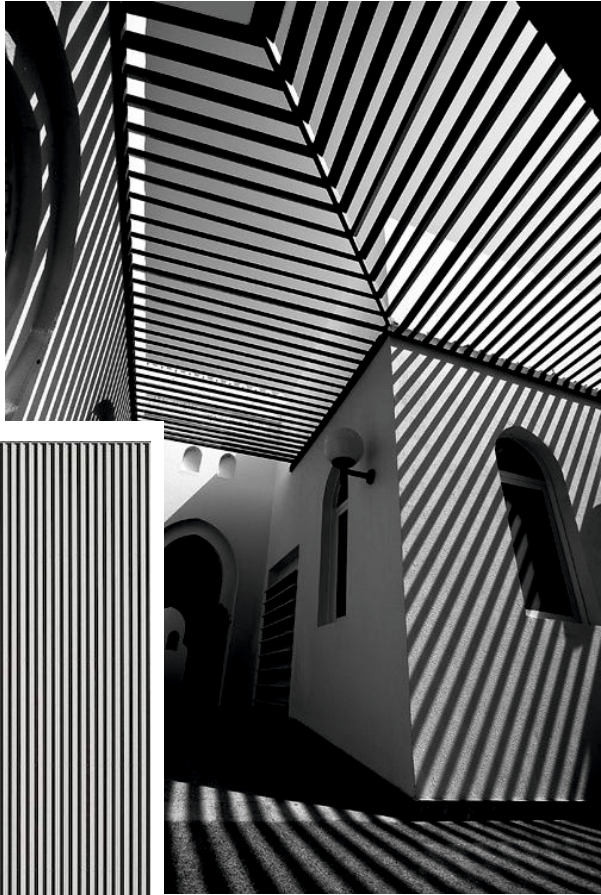
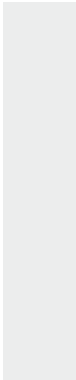
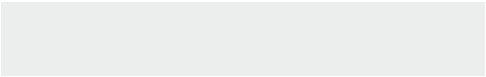


ORGANIC  
HANGER™



# does the stripe accept checks?

Effortless, humble, vertical & horizontal.  
This marriage of stripe, check & cross  
grey handwoven Kala Cotton fabric with  
edgy cuts will sing on you this summer.  
Textiles so light & airy, they work  
beautifully day or night.



OH01/17  
Paneled Stripe  
yoke pleated flare  
dress & pant set.





OH02/17  
Shoulder princess panel  
flare dress & pant set.



OHO4/17  
Half & Half big pleat  
shift dress & pant set.





OH05/17  
V Hem rounded placket  
flare dress & pant set.



OHo6/17  
Flared shirt dress & pant set.





OH07/17  
Thin & Thick stripe front  
slit shirt & pant set.



OH08/17  
Fish fin  
asymmetrical placket  
shirt & pant set.



OH09/17  
Princess panel  
mock shirt & pant set.





OH10/17  
Side paneled fabric  
blocked flare  
dress & pant set.

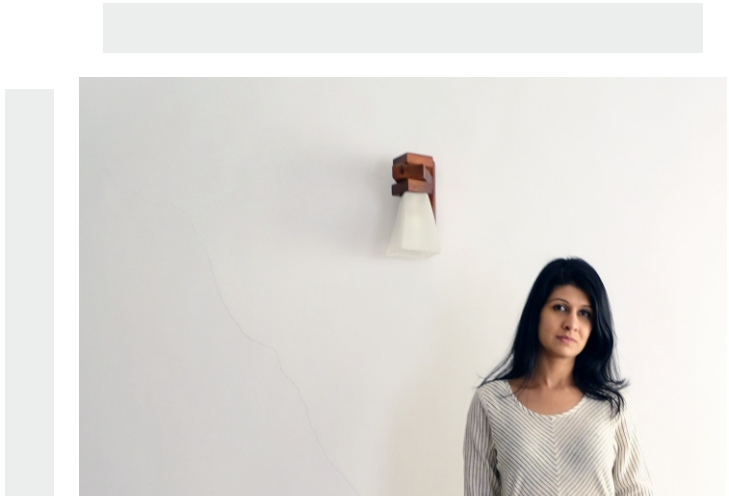




OH11/17  
Collar with mock  
placket side panel  
flare dress & pant set.

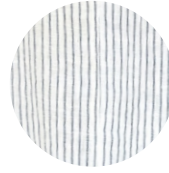






OH12/17  
Thin stripe gathered  
front dress & pant set.





### About the textile

Kala Cotton: An old world Indian cloth, which begins life in Kutch. Resilient to drought and wind, with high tolerance to pests and diseases makes for a beautiful alternative to the easily available, genetically modified cotton that requires irrigation & severe chemical treatment.

Kala Cotton is energy efficient, economically viable and promotes valuable ecological diversity in India. With minimal investment needed in its manufacture, its cultivation is best suited to marginal farmers who can't afford the risks that accompany modern day expensive cotton farming.

It is a versatile textile with strength, soft texture and a humble character.

We are proud, privileged and dedicated to help in the revival of this local organic crop.

– Ami & Ankita.





---

Write to us!  
[info@organichanger.com](mailto:info@organichanger.com)

---

Keep in touch with us!

  @organichanger

# Size Chart

All sizes are in inches and measured all around

SIZE	CHEST	WAIST	HIP	SHOULDER
Small	36	38	42	14
Medium	38	40	44	15
Large	40	42	45	16
X Large	42	44	47	16

Please Note:

- All the Organic Hanger garments have an additional 3 inch all round allowance of fabric in the final stitched product.
- Trousers are all round elasticated and flared at the bottom.
- Irregularities in the textile is not a flaw, but a validation of the product being hand woven. Kindly consider the same.

Wash care :

- Kala Cotton is a low maintenance fabric.
- Kindly machine wash separately in cold water with mild detergent.
- Hanger and shade dry if possible
- Our fabrics are pre-washed and shrunk before converting them into garments.